

# SONGLE RELAY

	<p>RELAY ISO9002</p>	<p>SLA</p>
---	----------------------	------------



## 1. MAIN FEATURES

- Up to 30A switching in SPST and 20A switching in spot arrangements.
- Available as an open-frame relay, with a snap-on dust cover or with an immersion cleanable, plastic sealed case.

## 2. APPLICATIONS

- Used for power switching, Electrical Heater, ventilator, Air conditioning, Refrigerating, Automobile and House-hold Appliance.

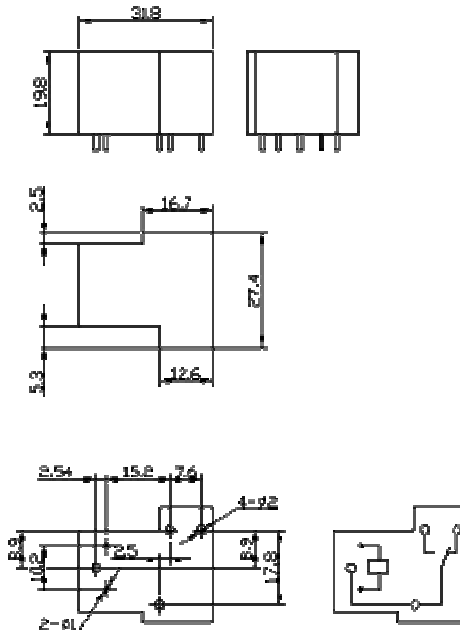
## 3. ORDERING INFORMATION

SLA	XX VDC	S	L	C
Model of relay	Nominal coil voltage	Structure	Coil sensitivity	Contact form
SLA	05□06□09□12□18□ 24□48□110VDC	S:Sealed type F:Flux free type	L:0.93W D:Special	A:1 form A B:1 form B C:1 form C

## 4. RATING

20A/28VDC 250VAC    30A/30VDC 250VAC  
 CCC    FILE NUMBER:CQC03001003728    30A/250VDC  
 UL/CUL    FILE NUMBER: E179944    NO:20A/240VAC 28VDC NC:10A/240VAC 28VDC  
 TUV    FILE NUMBER: R50056114    NO:30A/250VAC 30VDC NC:20A/250VAC 30VDC

## 5. DIMENSION (unit:mm)      DRILLING (unit:mm)      WIRING DIAGRAM



## 6. COIL DATA CHART (AT20 ° C)

Coil Sensitivity	Coil Voltage Code	Nominal Voltage (VDC)	Nominal Current (mA)	Coil Resistance (Ω) □10%	Power Consumption (W)	Pull-In Voltage (VDC)	Drop-Out Voltage (VDC)	Max-Allowable Voltage (VDC)
SLA	05	5	185	27	abt. 0.93W	75% Max.	10% Max.	120%Max.
	06	6	150	40				
	09	9	93	97				
	12	12	77	155				
	15	15	59	256				
	18	18	47	380				
	24	24	36	660				
	48	48	20	2480				
	110	110	9	13000				

## 7. CONTACT RATING

Type	SLA			
	FORM A	FORM B	FORM C	
			N/O	N/C
Resistive Load (cosΦ=1)	30A 250VAC 30A 30VDC 250VAC 2HP	15A 250VAC 10A 30VDC 250VAC 0.5HP	20A 250VAC 20A 30VDC 250VAC 2HP	10A 250VAC 10A 30VDC 250VAC 0.5HP
General Motor	120VAC 1HP	120VAC 0.25HP	120VAC 1HP	120VAC 0.25HP
Ballast	10A 277VAC	3A 277VAC	10A 277VAC	3A 277VAC
LRA/FLA	240VAC 80/30	240VAC 30/10	240VAC 50/20	240VAC 20/7

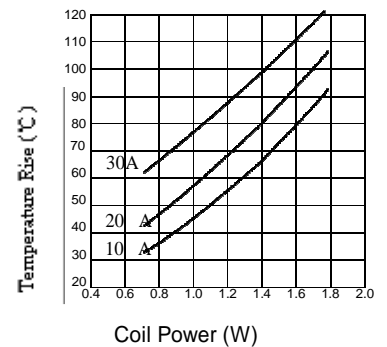
## 8. PERFORMANCE (at initial value)

Type	SLA
Contact Resistance	100mΩ Max.
Operation Time	15msec Max.
Release Time	10msec Max.
Dielectric Strength	
Between coil & contact	2000VAC
Between contacts	1500VAC
Insulation Resistance	100 MΩ Min. (500VDC)
Operating Ambient Temperature	-25□ to +70□C (storage)
Operating Humidity	45 to 85% RH
Coil Temperature Rise	60 deg. Max.
Vibration	
Endurance	10 to 55Hz Double Amplitude 1.5mm
Error Operation	10 to 55Hz Double Amplitude 1.5mm
Shock	
Endurance	100 m/sec <sup>2</sup> (abt. 100g's)
Error Operation	10 m/sec <sup>2</sup> (abt. 10g's)
Life Expectancy	
Mechanically	10 <sup>7</sup>
Electrically	10 <sup>5</sup>
Weight	abt. 20grs, 24grs(SEALED)
UL File No.	E179944

## 9. REFERENCE DATA

OPEN-STYLE RELAY,

NO DUST COVER



SEALED RELAY

